

# Chemical composition of *Artemisia herba-alba* essential oil and its larvicidal and pupicidal effects against *Culex pipiens* (Diptera; Culicidae)

**Aim :** Biological control by the use of active natural substances, non-polluting and used in a less harmful and more reasoned fight, by developing an extract that is the least expensive and the most effective possible

## Methods

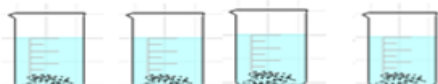
Aerial part  
Extraction  
Essential oil

Gas chromatography coupled to the mass spectrometry (CPG / SM)

Toxicological test

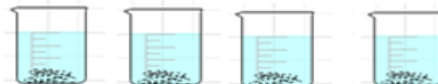
99/100 ml water

R1



15 larva/pupae

R2



1ml solution treatment

R3



D1

D2

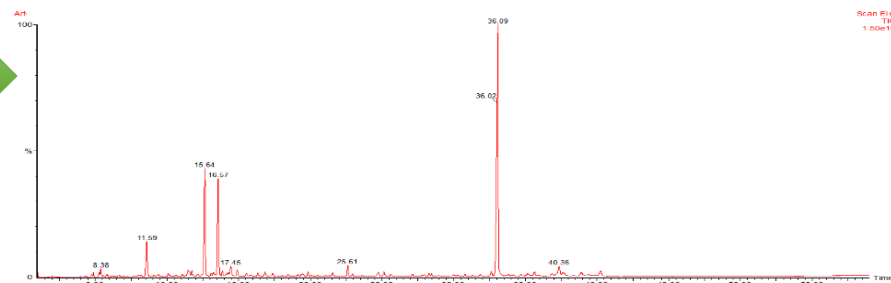
D3

Control

## Conclusion

This study indicates that essential oil of *Artemisia herba alba* having toxic properties on larvae and pupae of *Culex pipiens*.

## Results



Larvicidal and pupicidal effect of *A. herba alba* essential oil

