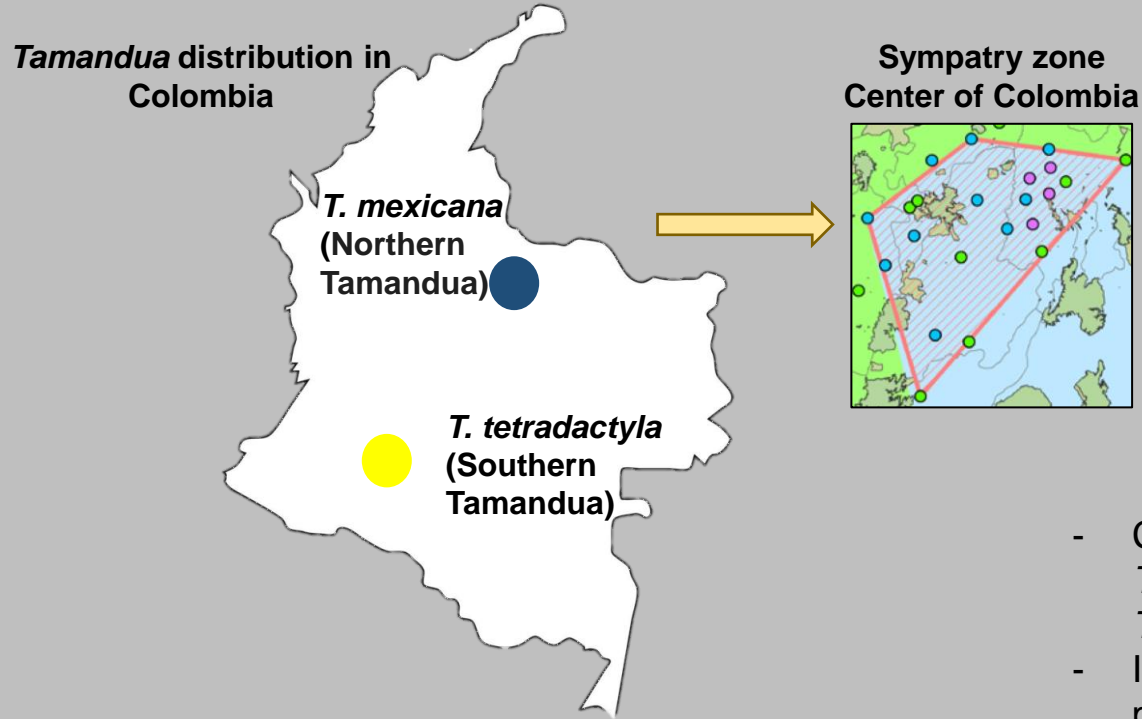


Phylogenetic analysis of colombian populations of the genus *Tamandua*

Alzate-Velásquez et al.



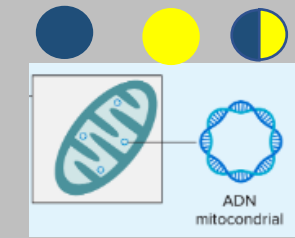
Individuals with intermediate phenotypes have been found in sympatry zone

RESEARCH QUESTION
What is the taxonomic identity of individuals with intermediate phenotype?

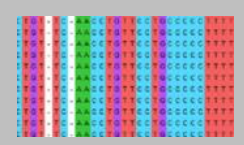
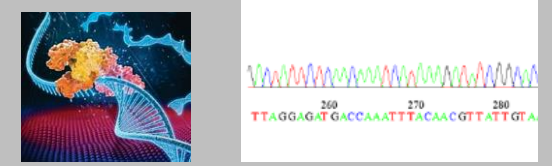
METHODOLOGY
Phylogenetic analysis with mitochondrial markers

RESULTS

- Clear differentiation between *T. mexicana* and *T. tetradactyla*.
- Individuals with intermediate phenotype are *T. mexicana*.



- rRNA16S
- COI
- HVI



- Maximum likelihood
- Bayesian analysis

CONCLUSION

- These results are consistent with the current taxonomic classification of *Tamandua*.
- These results do not support any further evolutionary process.
- The intermediate phenotype is not sufficient to indicate a speciation process.
- We recommend the use of nuclear markers in future studies with *Tamandua*.

