

Figure 1. A, B and C. Preparation of guiding planes and occlusal support

Source: by the authors

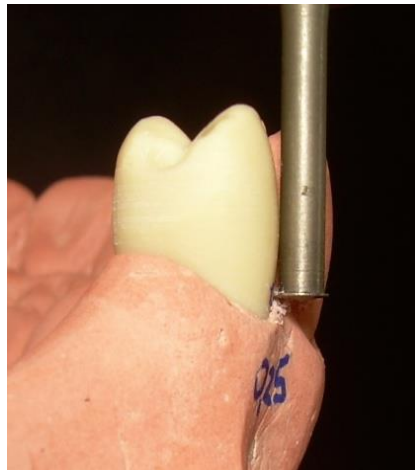


Figure 2. Measuring the convergence angle that determines the retention degree of the abutment tooth

Source: by the authors



Figure 3. Evaluation of the prosthetic base, including proper adaptation and adjustment to the plaster model

Source: by the authors

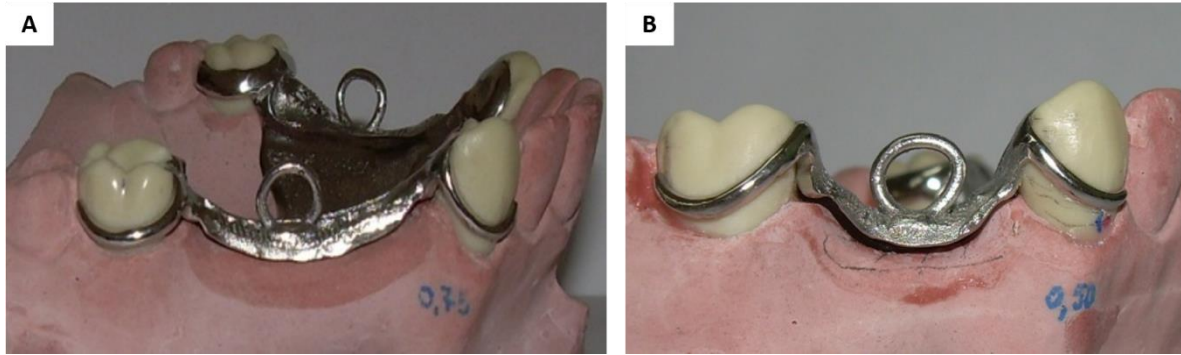


Figure 4. A and B. Metal bases in place with cast washers for tensile testing

Source: by the authors



Figure 5. A and B. Device used for tensile testing (Tinius Olsen H5K-S)

Source: by the authors



Figure 6. Traction device installed on metal bases to run the test

Source: by the authors

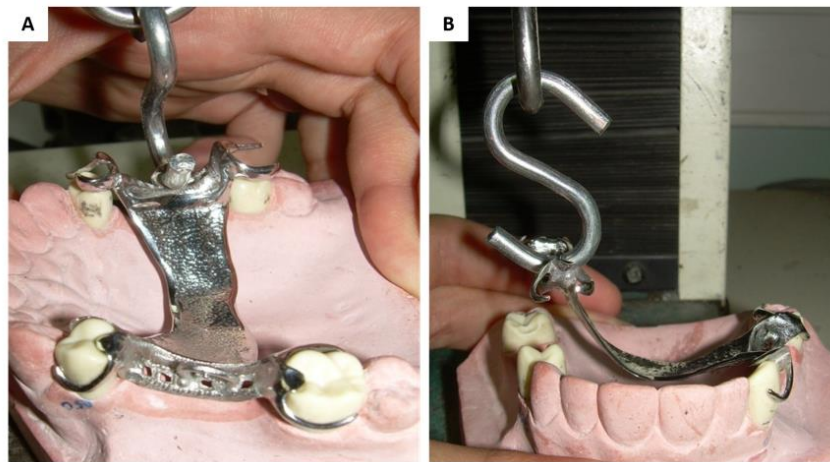


Figure 7. A and B. Traction device installed on metal bases to run the test

Source: by the authors



Figures 8. Removing retainers from the anterior sector

Source: by the authors

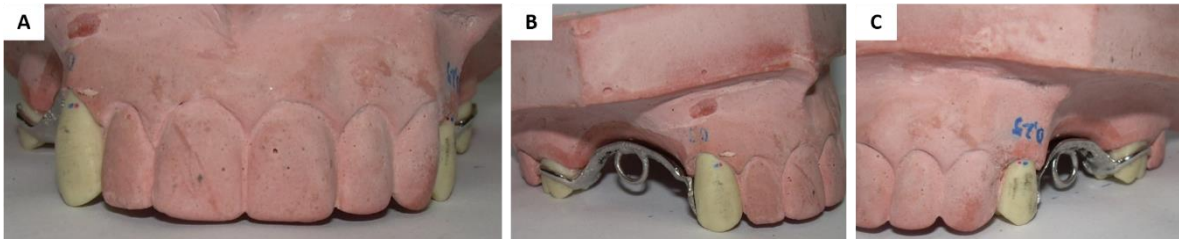


Figure 9. The esthetic change can be seen after removing the retainers from the anterior region with the base attached to the model

Source: by the authors

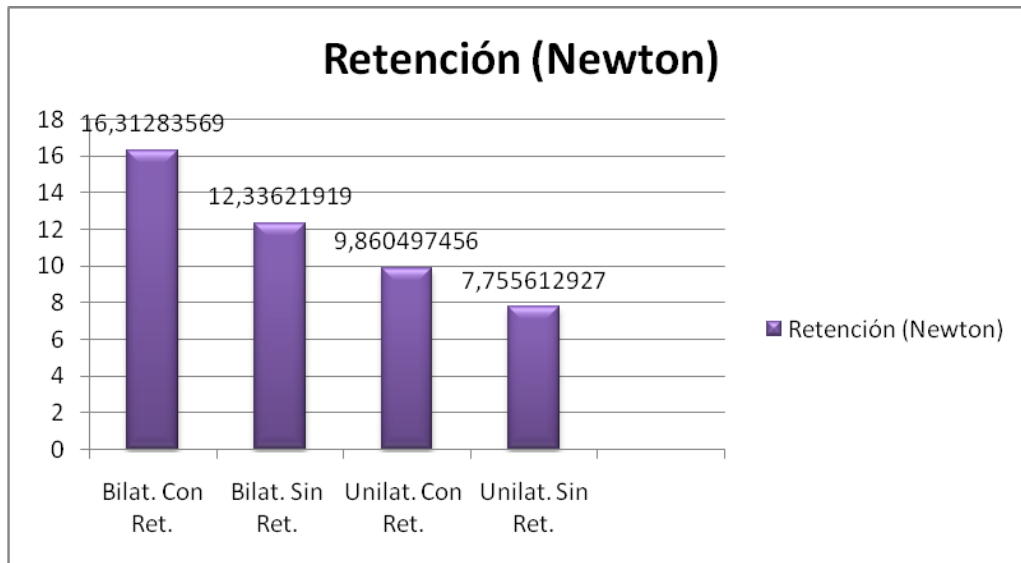


Figure 10. Retention of metal prosthetic bases with and without retainers in the anterior region when subjected to uni- and bilateral traction

Source: by the authors