



Figure 1. Initial front view, showing lesion on the right-side cheek



Figure 2. Measuring the fibroma



Figure 3. Firm grasping of the fibroma, avoiding a decrease in blood flow. Topical anesthesia before starting surgery

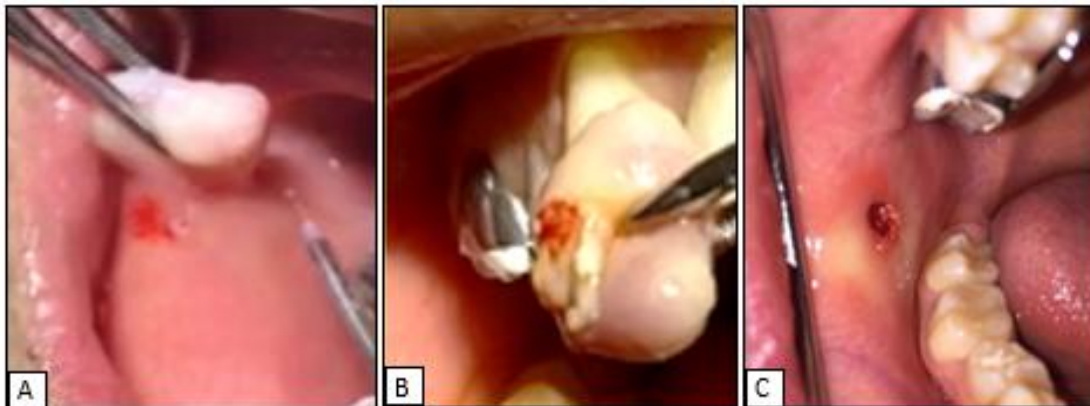


Figure 4. A. Ablation starts B. The fibroma is removed C. Surgical area immediately after removal of the insertion fibroma. No bleeding.



Figure 5. A. Control at 2 days B. Control at 8 days C. Control at 15 days. D. Control at 4 months

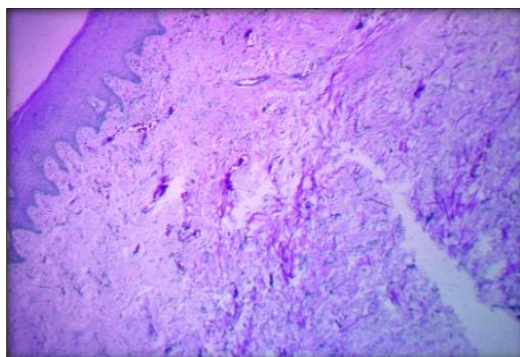


Figure 6. 10X microphotograph

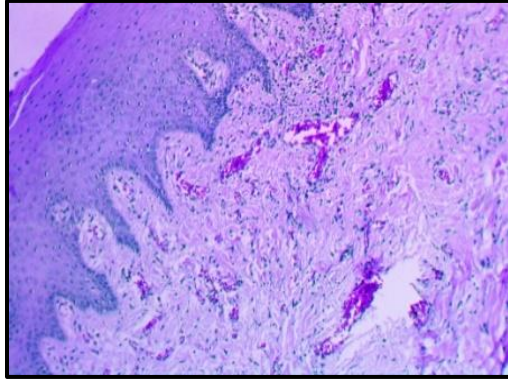


Figure 7. 20X microphotograph

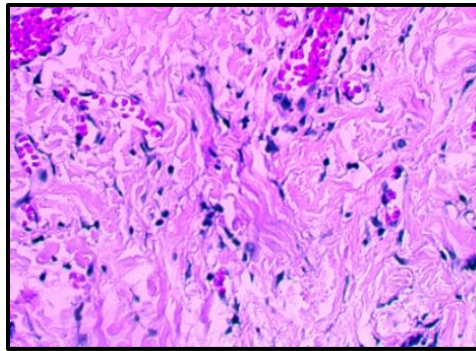


Figure 8. 40X microphotograph