



Figure 1. Clinical features: a normal-colored, elongated, and pedunculated swelling, with a smooth pink surface originating from the anterior and lateral hard palate mucosa

Source: by the authors

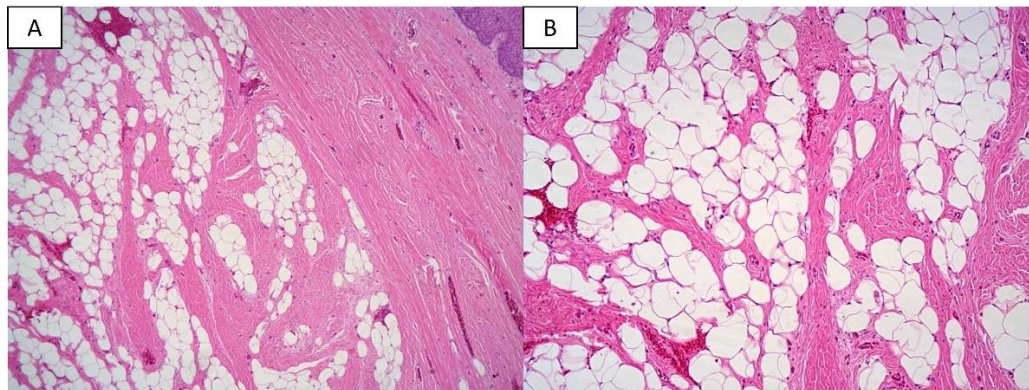


Figure 2. Histopathological features. A. Low-power microphotograph showing the fibrous capsule surrounding the proliferation of mature adipocytes and intersecting collagen bands (H&E, 5x). B. Detail of the adipocytes in a background of dense fibrous tissue (H&E, 10x)

Source: by the authors