

***In vitro* rumen biohydrogenation kinetics of mixed linoleic and alpha-linolenic acids[‡]**

Cinética de biohidrogenación ruminal in vitro de los ácidos linoleico y alfa-linolénico mezclados

Cinética de biohidrogenação ruminal in vitro dos ácidos linoleico e alfa-linolênico misturados

Julián A C Vargas^{1,2*}, Quím, M.Sc, Dr.Sc.; Martha Olivera-Angel², MV, Dr.Sc.Agr.; Cláudio V D M Ribeiro³, Zoot, M.Sc, PhD; Edgar E Daza C⁴, Quím, Dr.Sc.

¹Universidad Nacional de Colombia, Departamento de Ciencias para la Producción Animal, Carrera 30 No. 45-03, Bogotá D.C, Colombia.

²Universidad de Antioquia, Carrera 75 No. 65-87, Medellín, Colombia.

³Universidade Federal da Bahia, Av. Ademar de Barros 500, Salvador, BA, Brazil.

⁴Grupo de Química Teórica, Departamento de Química, Universidad Nacional de Colombia, Bogotá, Colombia.

(Received: March 13, 2017; accepted: December 10, 2017)

doi: 10.17533/idea.rccp.v31n3a06

Abstract

Background: Dietary linoleic (LA) and alpha-linolenic (LN) acids are extensively isomerized and hydrogenated by rumen microbes, and this activity can further contribute to the fatty acid profile of ruminant-derived food products. **Objective:** To evaluate the effects of LA:LN ratio in lipid supplements on the rumen biohydrogenation kinetics of LA and LN, as well as on the *trans*-vaccenic acid (VA) production, using an *in vitro* system. **Methods:** Rumen fluid was collected from a fistulated steer, diluted with incubation buffer, and then incubated with 500 mg of kikuyu grass (*Cenchrus clandestinus*) supplemented with 16.3 mg of different LA:LN mixtures (100:0, 75:25, 50:50, 25:75 or 0:100). Incubations were performed in triplicate for a period of 0, 2, 4, 6, 8 or 16 hours. Differences between treatments were evaluated in a completely randomized design. Alternatively, computational chemistry was used to determine the changes in the Gibbs free energy (ΔG_{rxn}) at 39 °C for the principal steps of LA and LN ruminal biohydrogenation. **Results:** Partial replacement of LA by LN decreased the VA concentration and its accumulation rate; it also increased the stearic acid concentration and the rates of transfer from LA to conjugated linoleic acid (CLA), and from CLA to VA. The conversion from CLA to VA ($\Delta G_{\text{rxn}} = -2.65$ kJ/mol) was more spontaneous than that from *trans*-11, *cis*-15 octadecadienoic acid (TA) to VA ($\Delta G_{\text{rxn}} = -0.29$ kJ/mol). **Conclusion:** The LA:LN ratio in lipids can modulate LA and LN biohydrogenation (BH) kinetics, as well as the VA production in the rumen.

Keywords: *Fatty acids, kinetics of biohydrogenation, lipid supplement, multi-compartmental model, thermodynamics of biohydrogenation.*

□ To cite this article: Vargas JAC, Olivera A M, Ribeiro CVDM, Daza C EE. *In vitro* rumen biohydrogenation kinetics of mixed linoleic and alpha-linolenic acid. Rev Colomb Cienc Pecu 2018; 31(1):213-222.

* Corresponding author: Julián AC Vargas. Universidad Nacional de Colombia, Departamento de Ciencias para la Producción Animal, Carrera 30 No. 45-03, Bogotá D.C. Tel.: 3165000. E-mail: jcastillov@unal.edu.co

Resumen

Antecedentes: los ácidos linoleico (LA) y alfa-linolénico (LN) de la dieta son extensivamente isomerizados y biohidrogenados por los microorganismos ruminales, lo cual puede contribuir al perfil de ácidos grasos de los productos derivados de rumiantes. **Objetivo:** evaluar el efecto de la relación LA:LN en suplementos lipídicos sobre la cinética de biohidrogenación ruminal del LA y LN, como también sobre la producción del ácido *trans*-vaccénico (VA), usando un sistema *in vitro*. **Métodos:** se colectó fluido ruminal de un toro fistulado, el cual fue diluido con buffer de incubación y posteriormente incubado con 500 mg de pasto kikuyo (*Cenchrus clandestinus*) suplementado con 16,3 mg de diferentes mezclas de LA:LN (100:0, 75:25, 50:50, 25:75, o 0:100). Las incubaciones fueron desarrolladas en triplicado durante 0, 2, 4, 6, 8 o 16 horas. Diferencias entre tratamientos fueron evaluadas mediante un modelo completamente al azar. Alternativamente, se determinaron los cambios en energía libre de Gibbs (ΔG_{rxn}) a 39 °C para los pasos principales de la biohidrogenación del LA y LN, usando química computacional. **Resultados:** la sustitución parcial de LA por LN disminuyó la concentración de VA y su tasa de acumulación, como también incrementó la concentración de ácido esteárico y las tasas de transferencia de LA para ácido linoleico conjugado (CLA) y de CLA para VA. La conversión de CLA para VA ($\Delta G_{\text{rxn}} = -2,65$ kJ/mol) fue más espontánea que la conversión del ácido *trans*-11, *cis*-15 octadecadienóico (TA) para VA ($\Delta G_{\text{rxn}} = -0,29$ kJ/mol). **Conclusiones:** la relación LA:LN en lípidos puede modular la cinética de biohidrogenación (BH) del LA y LN y la producción de VA en el rumen.

Palabras clave: ácidos grasos, cinética de biohidrogenación, modelo multi-compartmentalizado, suplemento lipídico, termodinámica de biohidrogenación.

Resumo

Antecedentes: o ácido linoleico (LA) e alfa-linolênico (LN) da dieta, são extensivamente isomerizados e biohidrogenados pelos microorganismos do rúmen, o que pode contribuir ao perfil de ácidos graxos dos produtos derivados de ruminantes. **Objetivo:** avaliar o efeito da relação LA:LN em suplementos lipídicos sobre a cinética de biohidrogenação ruminal do LA e LN como também sobre a produção do ácido *trans*-vaccênico (VA), utilizando um sistema *in vitro*. **Métodos:** coletou-se fluido ruminal de um novilho fistulado, o qual foi diluído com tampão de incubação e, em seguida, incubado com 500 mg de pasto kikuyu (*Cenchrus clandestinus*) suplementado com 16,3 mg de diferentes misturas LA:LN (100:0, 75:25, 50:50, 25:75 ou 0:100). As incubações foram desenvolvidas em triplicata, durante 0, 2, 4, 6, 8 ou 16 horas. Diferenças entre tratamentos foram avaliadas utilizando-se um delineamento inteiramente casualizado. Alternativamente, foram determinadas as mudanças em energia livre de Gibbs (ΔG_{rxn}) a 39 °C para as principais etapas da biohidrogenação do LA e LN, utilizando-se química computacional. **Resultados:** a substituição parcial de LA por LN diminuiu a concentração de VA e sua taxa de acumulação, como também aumentou a concentração de ácido esteárico e as taxas de transferência do LA para o ácido linoleico conjugado (CLA) e do CLA para VA. A conversão do CLA para VA ($\Delta G_{\text{rxn}} = -2,65$ kJ/mol) foi mais espontânea que a conversão do ácido *trans*-11, *cis*-15 octadecadienóico (TA) para VA ($\Delta G_{\text{rxn}} = -0,29$ kJ/mol). **Conclusões:** a relação LA:LN em lípidos pode modular a cinética de biohidrogenação (BH) do LA e LN e a produção de VA no rúmen.

Palavras-chave: ácidos graxos, cinética de biohidrogenação, modelo multi-compartmentalizado, suplemento lipídico, termodinâmica de biohidrogenação.

Introduction

Fatty acids (FAs) metabolism has a major influence on the FAs composition of ruminant-derived food products. Unsaturated FAs, including linoleic acid (LA; c9,c12-18:2) and alpha-linolenic acid (LN; c9,c12,c15-18:3), are abundant in grass and certain other ruminant feedstuffs (Buccioni *et al.*, 2012). However, LA and LN are present at low concentrations in milk and meat, because they are transformed into numerous isomers, including *trans*-vaccenic acid (VA;

t11-18:1) and conjugated linoleic acid (CLA; c9,t11-18:2) (Hur *et al.*, 2017). Consumption of CLA has been associated with human health benefits (Ferlay *et al.*, 2017).

The main ruminal biohydrogenation (BH) pathways of LA and LN have been described since the 60s (Kepler and Tove, 1967) and researchers have focused on better understanding their intricate pathways (Laverroux *et al.*, 2011; Ferlay *et al.*, 2017). Researchers have also studied which microbe

communities (Kim *et al.*, 2003; Maia *et al.*, 2010) and dietary FAs (Buccioni *et al.*, 2012; Prieto *et al.*, 2013) play major roles in increasing VA synthesis in the rumen. The main interest in VA is because it is the main endogenous precursor of CLA in milk and meat (Kay *et al.*, 2004; Rezamand *et al.*, 2014).

Some *in vitro* studies suggested that increasing levels of LN decrease the BH rate of VA, resulting in enhanced levels of VA in rumen fluid (Jouany *et al.*, 2007; Honkanen *et al.*, 2012). On the other hand, Ribeiro *et al.* (2007) reported that BH rate of LA is twice as fast as BH rate of LN, consequently producing more VA from LA than from LN. These contradictory results may be due to the use of LA and LN in esterified forms (Hoffmann *et al.*, 2015) and the presence of other FAs in fat supplements, which could interfere LA and LN ruminal BH (Pashaei *et al.*, 2016).

The scientific literature is still inconclusive regarding the effects of LA or LN levels on VA ruminal concentration. Therefore, the aim of this study was to evaluate the effects of LA:LN ratio in lipid supplements on the rumen biohydrogenation kinetics of LA and LN, as well as on the *trans*-vaccenic acid (VA) production, using an *in vitro* system.

Material and Methods

Ethical considerations

All procedures were approved by the Bioethics Committee of Facultad de Medicina Veterinaria y de Zootecnia, Universidad Nacional de Colombia (Act 001 of 2010).

Forage collection, animal, and preparation of rumen inoculum

Samples of Kikuyu grass (*Cenchrus clandestinus*) with 60 days of regrowth were harvested by hand plucking (Cook, 1964). Forage samples were dried at 60 °C and ground to pass a 1-mm sieve (Romer Labs, Getzersdorf, Austria).

One rumen-fistulated Holstein steer was used as donor of rumen fluid. The animal was kept in a pen during nighttime and received kikuyu grass, clean

fresh water, and mineral block *ad libitum* for 30 d before the rumen fluid was collected. In day 30 (at 07:00 h), 1,500 mL of rumen fluid were obtained from the steer before feeding. The rumen fluid was filtered through four layers of gauze, placed into a flask preheated at 39°C, transferred to separator funnels, and gassed with CO₂, recovering the intermediate phase. The collected phase was mixed with McDougall buffer 1:4 (McDougall, 1948), gassed with CO₂, and added with urea (1 g/L buffer), producing the rumen inoculum.

Diets, incubation procedures, and sample collections

Fifty milliliters of rumen inoculum pre-warmed at 39 °C were placed into 100 mL incubation tubes containing 500 mg ground kikuyu grass (1 mm) plus 16.3 mg/tube (3.3% of forage quantity to avoid toxic effects of excessive unsaturated FAs addition on cellulolytic population (Messana *et al.*, 2013)) of different LA:LN ratios (100:0, 75:25, 50:50, 25:75 or 0:100). Then, the filled tubes were gassed with CO₂, sealed with one-hole rubber stoppers (Fisherbrand, Pittsburgh, PA, USA) and incubated in a water bath at 39°C (Blue Sland Illinois, USA) (Tilley and Terry, 1963). Extra kikuyu tubes without the addition of LA:LN ratio mixtures were assigned as control treatment (CTRL).

Incubation times were 0, 2, 4, 6, 8, or 16 hours. Extra tubes with only 50 mL of pre-warmed rumen inoculum were used as blanks. Three replications were prepared per treatment. Incubations were stopped by adding 500 µL of 20 g/L mercury (II) chloride (Merck®, Kenilworth, NJ, USA) solution, and placing the tubes in an ice bath. The content of the tubes was freeze-dried (Alpha 1-4 Christ® plus LO lyophilizer), ground (Romer Labs, Getzersdorf, Austria), and stored at -60 °C until analyses were performed.

Laboratory analysis

Forage samples were analyzed for crude protein (182 g/kg DM) (AOAC, 2006, method: 984.13), ash (117 g/kg DM) (AOAC, 2006, method: 942.05), and ether extract (30.0 g/kg DM) (AOAC, 2006, method: 930.09). Neutral detergent fiber (609 g/kg DM) was determined using alpha-amylase without sodium sulfite addition, according to Van Soest *et al.* (1991).

Acid detergent fiber (322 g/kg DM) was determined using the method described by Goering and Van Soest (1970).

The FAs in forage samples and incubated tubes were extracted and methylated according to Garcés and Mancha (1993). The FAs in the LA:LN ratio mixtures were methylated using a 0.2 N solution of (m-trifluoromethylphenyl) trimethylammonium hydroxide (Methprep™ I) (Alltech™, Nicholasville, KY, USA). Methylated FAs of forage and LA:LN ratio mixtures (Table 1) as well as the methyl esters of principal FAs intermediaries of LA and LN ruminal BH were quantified by GLC-FID using a Shimadzu GC-2014 gas chromatograph (Shimadzu Manufacturing, Inc., Canby, OR, USA). The column was a fused silica capillary (Rt-2560, 100 m x 0.25 mm i.d. x 0.2 µm film thickness; Restec®, Inc, Belefonte, PA, USA). Helium was used as the carrier gas. Detector and injector temperatures were 260 and 270 °C, respectively, and the split ratio was 30:1. Oven temperature was 140 °C for 5 min, increased by 4 °C/min to 220 °C, held for 5 min, increased by 2.0 °C/min to 240 °C, and held for 10 min. The FAs in samples were identified by comparison of their retention times with those observed in commercial standards as Nu-Chek® Prep (Elysian, MN, USA), and quantified by direct comparison of the peak areas.

Thermodynamic analyses of LA and LN ruminal BH by computational chemistry

Thermodynamic analyses of LA and LN ruminal BH were performed using the Molecular Orbital

Package Software (MOPAC) (Version 8.289L). The optimization method (PM6) parameter was used to establish the Gibbs free energy of formation (ΔG_f) at 39 °C of the FAs produced during LA and LN ruminal BH. These ΔG_f values were used to calculate ΔG_{rxn} of the main steps of LA and LN ruminal BH (Stewart, 2007). The ΔG_{rxn} for each step was calculated as follow:

$$\Delta G_{rxn} = \sum(\Delta G_{f_{products}}) - \sum(\Delta G_{f_{reagents}}) \quad (1)$$

Where:

$\sum(\Delta G_{f_{products}})$ and $\sum(\Delta G_{f_{reagents}})$ are the sum of ΔG_f of products and reagents, respectively.

Calculations and statistical analysis

Ruminal BH of LA and LN for each treatment (with exception of CTRL treatment because FAs concentration of BH intermediaries were very low) was modeled by using a multi-compartmental model (Figure 1). The rates of transfer between FAs pools were estimated using the SAAM II software (SAAM, 1997). *Trans*-9 octadecenoic acid (t9-18:1), *trans*-6 octadecenoic acid (t6-18:1), *cis*-11 octadecenoic acid (c11-18:1), and *cis*-6 octadecenoic acid (c6-18:1) (i.e., sum 18:1) were not included in the model as independent pools because their concentrations were very low. Therefore, just one pool was used to represent t9-18:1, t6-18:1, c11-18:1, c6-18:1, according to Ribeiro *et al.* (2007). Rumelenic acid (RU; c9,t11,c15-18:3) (i.e., produced by the *cis*-12 double bond isomerization of LN) was not determined in the incubation systems, thus it was not included in

Table 1. Fatty acid composition of forage, and c9,c12-18:2 (LA) and c9,c12,c15-18:3 (LN) ratio mixtures.

Fatty acid composition (g/100 g FAs)	Forage	LA:LN ratios				
		100:0	75:25	50:50	25:75	0:100
12:0	0.9	- ¹	-	-	-	-
14:0	1.4	-	-	-	-	-
16:0	33.4	-	-	-	-	-
18:0	5.1	-	-	-	-	-
20:0	1.6	-	-	-	-	-
c9-18:1	2.5	-	-	-	-	-
c9,c12-18:2	11.6	100.0	75.7	49.3	23.9	0.30
c9,c12,c15-18:3	43.0	-	24.3	50.7	76.1	99.7
c5,c8,c11,c14-18:4	0.5	-	-	-	-	-

¹Not detected.

the model. The rate of transfer from stearic acid (SA; 18:0) to oleic acid (OA; c9-18:1) (dehydrogenation) was also included in the model because its inclusion produced the lowest AIC (Akaike information criterion) and because ruminal fungus *P. communis* can dehydrogenate SA to OA using a ruminal Δ^9 -desaturase (Kemp *et al.*, 1984; Ferlay *et al.*, 2017). The Rosenbrock integrator method (SAAM, 1997) was used and optimized with a variance model based on relative data and the forward derivatives.

The VA accumulation rate (r-VA) for each treatment was calculated by fitting the Gompertz model (Gompertz, 1825) using the NLIN procedure of SAS, and their initial parameters were determined by Curve Expert Basic (Version 1.4). The full mathematical model used was:

$$V(t) = a \times \exp(-1 \times (\exp(b - (c \times t)))) + e_i \quad (2)$$

Where:

V is the VA concentration at *t* hours.

a is the concentration at 16 hours.

b is the difference between VA concentrations at 0 and 16 hours.

c is the r-VA.

e_i is the residual error of the model.

The values of LA, LN, VA, and SA concentrations were analyzed as a completely randomized design in a 6×6 factorial arrangement of treatment and time using the MIXED procedure of SAS. The statistical model included fixed effects of treatment, hour of sampling, and hour of sampling × treatment (Snedecor and Cochran, 1989). The r-VA and the rates of transfer of the multi-compartmental models were analyzed as a completely randomized design. Differences between treatments were significant at $p < 0.05$.

Results

The LA and LN concentration decreased (Figure 2(a) and (b)) in all treatments, whereas VA and SA increased

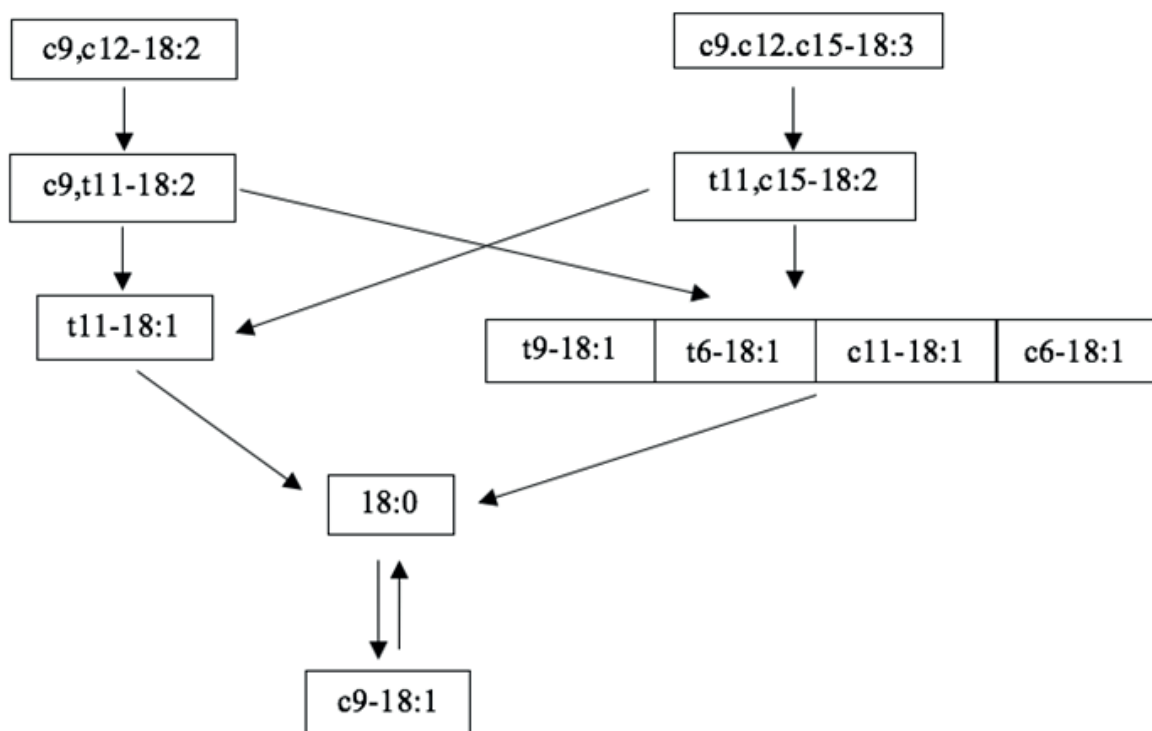


Figure 1. Proposed main pathways of linoleic (LA; c9,c12-18:2) and alpha-linolenic (LN; c9,c12,c15-18:3) acids biohydrogenation.

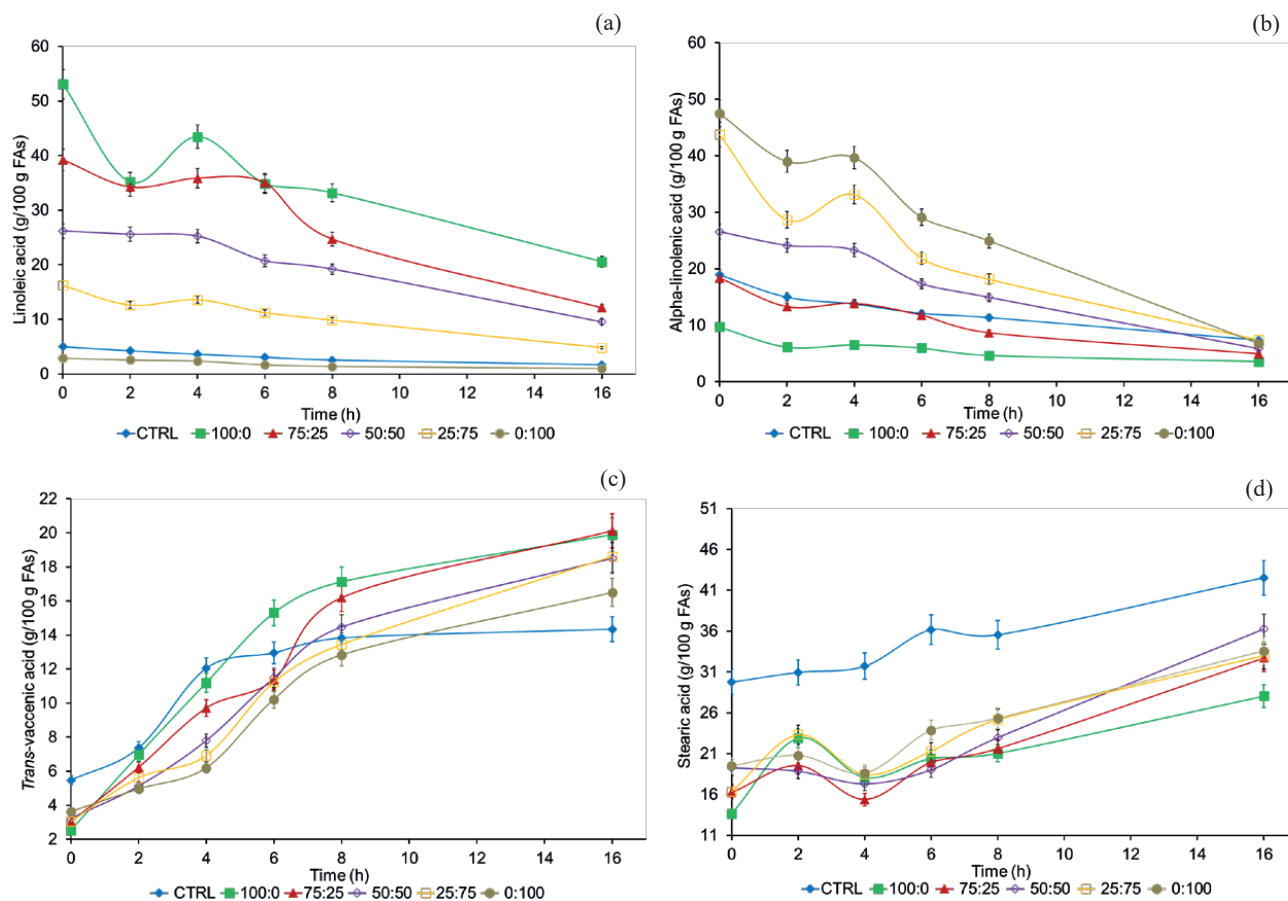


Figure 2. Fatty acids concentration in incubation systems without (CTRL), and with the addition of linoleic (LA; c9,12-18:2), and alpha-linolenic (LN; c9,c12,c15-18:3) acids ratio mixtures (LA:LN: 100:0, 75:25, 50:50, 25:75, and 0:100); (a) c9,c12-18:2; (b) c9,c12,c15-18:3; (c) *trans*-vaccenic acid (VA; t11-18:1); and (d) stearic acid (SA; 18:0); bars represent the standard error of the mean. The fatty acids concentration differs between treatments ($p < 0.05$).

(Figure 2(c) and (d)) as incubation time increased ($p < 0.01$). In addition, VA concentration decreased (Figure 2 (c)), whereas SA concentration increased (Figure 2 (d)) from 100:0 to 0:100 LA:LN ratios, at 16-hour incubation ($p < 0.01$). It was noteworthy that LA and LN concentrations unexpectedly increased from 2 to 4 h, whereas SA concentration unexpectedly decreased in the same period for treatments in which LA:LN ratios mixtures were added.

The r-VA decreased as the LN proportion increased in the LA:LN ratio mixtures (Table 2; $p < 0.01$). However, r-VA did not differ between the following treatments: CTRL and LA:LN 100:0, LA:LN 75:25 and LA:LN 50:50, and LA:LN 25:75 and LA:LN 0:100 (Table 2; $p > 0.05$).

Partial substitution of LA by LN increased the rate of transfer from LA to CLA, from CLA to VA, and

Table 2. *Trans*-vaccenic acid accumulation rates (r-VA) when linoleic and alpha-linolenic acid ratios mixtures (LA:LN) plus kikuyu grass were incubated in rumen fluid during 16 h.

	LA:LN ratios						SEM	p-value
	CTRL	100:0	75:25	50:50	25:75	0:100		
r-VA (%/h)	0.353 ^a	0.335 ^a	0.232 ^{b,c}	0.245 ^b	0.184 ^c	0.185 ^c	0.014	<0.001

Values with different superscript letters (^{a, b, c}) within a row differ statistically ($p < 0.05$).

SEM: standard error of the mean.

p-value: differences in parameters between treatments.

from CLA to sum 18:1 (Figure 1; Table 3; $p < 0.05$). Also, the rate of transfer from LN to *trans*-11, *cis*-15 octadecadienoic acid (TA; t11,c15-18:2) differed between 100:0 and 25:75 LA:LN ratio mixture, as well as between 75:25 and 25:75 LA:LN ratio mixtures, and concomitantly, the rates of transfer from SA to OA just increased from 75:25 to 25:75 LA:LN ratios mixtures (Figure 1; Table 3; $p < 0.01$). For the other rates of transfer, comparison between treatments were not significantly different (Figure 1; Table 3; $p > 0.10$).

The ΔG_{rxn} at 39 °C for the conversion from CLA (c9,t11-18:2) to VA (t11-18:1) (-2.65 kJ/mol) was lower than that from TA (t11,c15-18:2) to VA (-0.29 kJ/mol) indicating that conversion from CLA to VA was more spontaneous than that from TA to VA. In addition, ΔG_{rxn} at 39 °C for the conversion from VA to SA (+15.9 kJ/mol) presented low spontaneity under ruminal conditions (Figure 3).

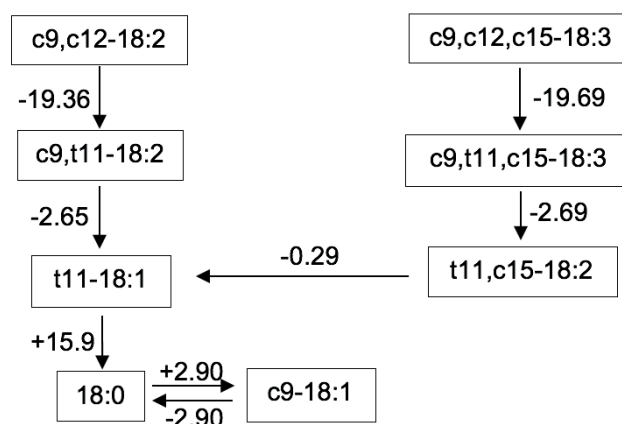


Figure 3. Thermodynamic description of the main steps of linoleic (LA; c9,c12-18:2) and alpha-linolenic (LN; c9,c12,c15-18:3) acids biohydrogenation. The values next to the arrows correspond to changes of Gibbs free energy of reaction (ΔG_{rxn} , kJ/mol) at 39 °C.

Table 3. Rates of transfer (%/h) between intermediates of linoleic (LA; c9,c12-18:2) and alpha-linolenic (LN; c9,c12,c15-18:3) acids biohydrogenation when LA:LN ratios mixtures and kikuyu grass, were incubated in rumen fluid during 16 h.

Reaction	LA:LN ratios mixtures					SE	p-value
	100:0	75:25	50:50	25:75	0:100		
BH of Linoleic acid							
c9,c12-18:2→c9,t11-18:2	0.059 ^a	0.057 ^a	0.054 ^a	0.068 ^{a,b}	0.075 ^b	0.005	0.044
c9,t11-18:2→t11-18:1	0.76 ^a	0.58 ^a	0.59 ^a	1.81 ^b	4.17 ^c	0.261	0.001
c9,t11-18:2→sum 18:1 ¹	0.041 ^a	0.044 ^a	0.038 ^a	0.21 ^b	1.90 ^{a,b}	0.013	0.037
BH of Linolenic acid							
c9,c12,c15-18:3→t11,c15-18:2	0.076 ^a	0.076 ^a	0.076 ^{a,b}	0.10 ^b	0.096 ^{a,b}	0.018	<0.001
t11,c15-18:2→t11-18:1	0.24	0.31	0.24	0.13	0.17	0.065	0.114
t11,c15-18:2→sum 18:1	0.10	0.020	0.24	0.039	0.040	0.054	0.466
Other BH pathways							
t11-18:1→18:0	0.078	0.072	0.053	0.057	0.075	0.026	0.894
18:0→c9-18:1	0.0020 ^{a,b}	0.000039 ^a	0.0027 ^b	0.32 ^c	0.080 ^{a,b,c}	0.001	0.003
c9-18:1→18:0	0.043	0.032	0.047	1.90	2.04	0.339	0.095
sum 18:1 ¹ →18:0	0.054	0.027	0.045	0.21	0.16	0.020	0.597

Values with different superscript letters (^{a, b, c}) within a row differ statistically ($p < 0.05$).

p-value refers to differences in parameters between treatments.

¹Sum 18:1= 18:1-t9 + 18:1-t6 + 18:1-c6 + 18:1-c11.

Discussion

The goal of the current study was to investigate the effects of LA:LN ratio in lipid supplements on the BH kinetics of LA and LN, as well as on the VA production in an *in vitro* ruminal system. Our results indicated that partial substitution of LA by LN in lipid supplements increased isomerization and biohydrogenation rates of the main steps of LA and LN ruminal BH, and decreased VA production.

Our data showed that, regardless of LA:LN ratio, LN disappears faster than LA. This suggests that, regardless of LA:LN proportion in lipids supplements, LN tends to be biohydrogenated faster than LA. Additionally, we found that LA tends to accumulate in ruminal fluid when its concentration in lipid supplements is greater than LN concentration. This agrees with Jouany *et al.* (2007), who demonstrated that disappearance rates of LA ranged from 78.7 to 85.9%, whereas that of LN ranged from 80.0 to 91.2%, also showing that LA ruminal BH produces a major diversity of FAs isomers than LA ruminal BH. Thus, regardless of lipid supplement composition, LN tends to escape more easily than LN from ruminal BH. In addition, if lipid supplements are rich in LA, the proportion of LA that escapes from ruminal BH increases. This information may be useful for designing lipid supplements directed to increase LA and LN concentration in ruminant milk and fat.

Factors affecting ruminal VA concentration have been extensively studied (Jenkins *et al.*, 2008; Hur *et al.*, 2017), considering that the majority of CLA in ruminant milk and meat derives from desaturation of VA by stearoyl-CoA desaturase in mammary gland and tissues (Kay *et al.*, 2004; Rezamand *et al.*, 2014). Our data revealed that partial substitution of LA by LN decreased the VA concentration, and increased SA production. Additionally, partial substitution of LA by LN decreased the r-VA. It suggests that an increase in LA concentration in lipid supplements could decrease the conversion from VA to SA (a common step of LA and LN ruminal BH), increasing VA ruminal accumulation with the respective decrease in SA ruminal production. These results are in

agreement with Ribeiro *et al.* (2007), who found that the BH rate of LA is twice as fast as the BH rate of LN, consequently producing more VA from LA than from LN. Thus, supplements rich in LA may be more desirable than supplements rich in LN for enhancing CLA concentration in ruminant milk and meat.

We observed that LA and LN concentrations decreased from 2 to 4 h, and, unexpectedly, decreased from 4 to 6 h. Concomitantly, SA concentration decreased from 2 to 4 h, and, unexpectedly increased from 4 to 6 h. Similar changes in LA, LN, and SA concentrations at the same hours have been reported in other *in vitro* studies (Jouany *et al.*, 2007; Sterk *et al.*, 2010), but no explanation has been proposed. Since the best multi-compartmental model (i.e., model with the lowest AIC; data not shown) was obtained when conversion from SA to OA was included, and the LA:LN ratio in mixtures affected the rate of transfer from SA to OA, we suggest that desaturation from SA to OA may explain the increase in LA and LN, and the decrease in SA concentration between the aforementioned incubation times. Rumen conditions does not favor FAs desaturation (Van Soest *et al.*, 1994). However, it has been observed that fungi (i.e., *Piromyces communis*) are able to desaturate SA to OA, and form CLA (Kemp *et al.*, 1984; Ferlay *et al.*, 2017). Therefore, considering that FAs concentration patterns and mathematical models have biological coherence, these results may constitute evidence that ruminal microorganisms are capable of desaturate FAs, suggesting that additional studies are needed to identify specific microbial species involved in FAs ruminal desaturation.

Previous studies have identified the FAs intermediates and products of LA and LN ruminal BH, modelling their BH kinetics (Jenkins *et al.*, 2008; Hur *et al.*, 2017). However, no previous studies have explored the effects of different LA:LN ratios in lipid supplements on the LA and LN ruminal BH kinetics utilizing a multi-compartmental model. Our data showed that partial substitution of LA by LN increased the rates of transfer from LA to CLA, from CLA to VA, and from CLA to sum 18:1. On the contrary, the rate of transfer from LN to TA slightly increased, and from TA to VA did not increase as LN increased in the mixtures. In this sense, the increase of LN enhanced BH of LA; however, increase of LA did not enhance BH of LN. This suggest that LA and LN may interact during their BH,

which is in accordance with Troegeler-Meynadier *et al.* (2003), and Jouany *et al.* (2007), who suggested that LA and LN share linoleate isomerase enzyme (EC 5.2.1.5) in the first step of LA and LN ruminal BH. Thus, not only LA and LN concentration but also their proportion in lipid supplement could affect the rates of transfer of principal steps of LA and LN ruminal BH. Considering that transfer efficiency of FAs from rumen to milk and ruminant meat is limited by ruminal BH (Schmidely *et al.*, 2017), the kinetic parameters derived from this study could be incorporated into mathematical models to explore the effects of FAs composition in lipid supplements on milk and meat FAs concentrations. This information could be useful for designing nutritional strategies to enhance the quality of ruminant-derived products.

In this study, we explored for the first time, the use of computational chemistry to evaluate the spontaneity of the reactions during LA and LN ruminal BH. Our data showed that conversion from CLA to VA is more spontaneous than that from TA to VA. The thermodynamic responses of these reactions were in accordance with their respective kinetics responses, because the rates of transfer from CLA to VA were greater than the rates of transfer from TA to VA, irrespective of the LA:LN ratio used. Also, our data showed that conversion from VA to SA may present low spontaneity under ruminal conditions. This explains why VA tends to accumulate in the rumen, as revealed by the present study, as well as in other studies exploring the effects of lipid supplementation on VA concentration (Sterk *et al.*, 2010; Prieto *et al.*, 2013). Thus, kinetic and thermodynamic approaches were biologically coherent, suggesting that thermodynamics could be useful for interpreting the kinetics of LA and LN ruminal BH.

In summary, this study indicates that the LA:LN ratio can modulate the kinetics of LA and LN ruminal BH affecting VA production. We demonstrated that thermodynamics contributes to the understanding of several kinetics responses during LA and LN ruminal BH. Thus, an integrated overview of kinetics and thermodynamics of LA and LN ruminal BH could help to design future strategies for improving FAs composition of ruminant-derived food products.

Acknowledgements

The authors thank the Bogota Research Division (DIB) of the National University of Colombia, and Colciencias for funding this study, which derived from Project “*Efecto de la suplementación de vacas lactantes con fuentes ricas en ácidos grasos insaturados sobre el perfil de la leche, transcripción de enzimas lipogénicas, actividad SRBP1 y su relación con diferentes componentes del perfil de ácidos grasos en leche*” (code: 1115-452-21319). Thanks also to the University of Antioquia.

Conflicts of interest

The authors declare they have no conflicts of interest with regard to the results presented in this report.

References

- Association of Analytical Chemists (AOAC). Official Methods of Analysis, 18th ed. Arlington, VA, USA. 2006.
- Buccioni A, Decandia M, Minieri S, Molle G and Cabiddu A. Lipid metabolism in the rumen: New insights on lipolysis and biohydrogenation with an emphasis on the role of endogenous plant factors. *Anim Feed Sci Technol* 2012; 174(1-2):1-25.
- Cook CW. Symposium on Nutrition of Forages and Pastures: Collecting forage samples representative of ingested material of grazing animals for nutritional studies. *J Anim Sci* 1964; 23(1):265-270.
- Ferlay A, Bernard L, Meynadier A and Malpuech-Brugère C. Production of trans and conjugated fatty acids in dairy ruminants and their putative effects on human health: A review. *Biochimie* 2017; In press.
- Garcés R and Mancha M. One-step lipid extraction and fatty acid methyl esters preparation from fresh plant tissues. *Anal Biochem* 1993; 211(1):139-143.
- Goering HK and Van Soest PJ. Forage Fiber Analysis (Apparatus, Reagents, Procedures and Some Applications). *Agricultural Handbook No. 379*. US Government Printing Office, Washington, DC. 1970.
- Gompertz B. On the nature of the function expressive of the law of human mortality, and on a new mode of determining the value of life contingencies. *Philos Trans R Soc* 1825; 115: 513–583.
- Hoffmann A, Steingass H, Schollenberger M, Terry H, Hartung K, Weiss E and Mosenthin R. Effects of different forms and origins of oilseeds on dynamics of ruminal biohydrogenation of long-chain fatty acids in vitro. *J Anim Physiol Anim Nutr* 2015; 99(6):1031-1038.
- Honkanen AM, Griinari JM, Vanhatalo A, Ahvenjärvi S, Toivonen V and Shingfield KJ. Characterization of the disappearance and formation of biohydrogenation intermediates during incubations

- of linoleic acid with rumen fluid in vitro. *J Dairy Sci* 2012; 95(3):1376-1394.
- Hur SJ, Kim HS, Bahk YY and Park Y. Overview of conjugated linoleic acid formation and accumulation in animal products. *Livest Sci* 2017; 195: 105-111.
- Jenkins TC, Wallace RJ, Moate PJ and Mosley EE. Board-Invited Review: Recent advances in biohydrogenation of unsaturated fatty acids within the rumen microbial ecosystem. *J. Anim. Sci* 2008; 86(2):397-412.
- Jouany JP, Lassalas B, Doreau M and Glasser F. Dynamic features of the rumen metabolism of linoleic acid, linolenic acid and linseed WJ oil measured in vitro. *Lipids* 2007; 42:351-360.
- Kay JK, Mackle TR, Auldish MJ, Thomson NA and Bauman DE. Endogenous Synthesis of cis-9, trans-11 Conjugated linoleic Acid in Dairy Cows Fed Fresh Pasture. *J Dairy Sci* 2004; 87(2):369-378.
- Kemp P, Lander DJ and Orpin CG. The lipids of the rumen fungus *Piromonas communis*. *J Gen Microbiol* 1984; 130:27-37.
- Kepler CR and Tove SB. Biohydrogenation of unsaturated fatty acids. 3. Purification and properties of a linoleate delta-12-cis, delta-11-trans-isomerase from *Butyrivibrio fibrisolvens*. *J Biol Chem* 1967; 242(24):5686-5692.
- Kim YJ. Partial inhibition of biohydrogenation of linoleic acid can increase the conjugated linoleic acid production of *Butyrivibrio fibrisolvens* A38. *J Agric Food Chem* 2003; 51(5):4258-4262.
- Laverroux S, Glasser F and Gillet M. Isomerization of vaccenic acid to cis and trans C18:1 isomers during biohydrogenation by rumen microbes. *Lipids* 2011;46:843-850.
- Maia MR, Chaudhary LC, Bestwick CS, Richardson AJ, McKain N, Larson TR, Graham IA and Wallace RJ. Toxicity of unsaturated fatty acids to the biohydrogenating ruminal bacterium, *Butyrivibrio fibrisolvens*. *BMC Microbiol* 2010; 52: 1-10.
- Messana JD, Berchielli TT, Arcuri PB, Reis RA, Canesin RC, Ribeiro AF, Fiorentini G and Fernandes JJR. Rumen fermentation and rumen microbes in Nellore steers receiving diets with different lipid contents. *R Bras Zootec* 2013; 42(3):204-212.
- McDougall EI. Studies on ruminant saliva. 1. The composition and output of sheep's saliva. *Biochem J* 1948; 43(1):99-109.
- Pashaei S, Ghoorchi T and Yamchi A. Evaluation of biohydrogenation rate of canola vs. soya bean seeds as unsaturated fatty acids sources for ruminants in situ. *J Anim Physiol Anim Nutr* 2016; 100(2):211-216.
- Prieto N, Dugan MER, López-Campos O, Aalhus JL and Uttaro B. At line prediction of PUFA and biohydrogenation intermediates in perirenal and subcutaneous fat from cattle fed sunflower or flaxseed by near infrared spectroscopy. *Meat Sci* 2013; 94(1):27-33.
- Rezamand P, Watts JS, Yavah KM, Mosley EE, Ma L, Corl BA and McGuire MA. Relationship between stearoyl-CoA desaturase 1 gene expression, relative protein abundance, and its fatty acid products in bovine tissues. *J Dairy Res* 2014; 81(3): 333-339.
- Ribeiro CVDM, Eastridge ML, Firkins JL, St-Pierre NR and Palmquist DL. Kinetics of fatty acid biohydrogenation in vitro. *J Dairy Sci* 2007; 90(3):1405-1416.
- SAAM. SAAM II User Guide. Seattle, WA: SAAM Inst; 1997.
- Schmidely P, Ghazal S and Berthelot V. Effect of rumen-protected conjugated linoleic acid on ruminal biohydrogenation and transfer of fatty acids to milk in dairy goats. *Livest Sci* 2017; 199: 7-13.
- Snedecor GW and Cochran WG. *Statistical methods*, 8th ed. Ames, Iowa: Iowa State University Press; 1989.
- Sterk A, Hovenier R, Vlaeminck B, van Vuuren AM, Hendriks WH and Dijkstra J. Effects of chemically or technologically treated linseed products and docosahexaenoic acid addition to linseed oil on biohydrogenation of C18:3n-3 in vitro. *J Dairy Sci* 2010; 93(11):5286-5299.
- Stewart JJP. Optimization of parameters for semiempirical methods V: modification of NDDO approximations and application to 70 elements. *J Mol Model* 2007; 13(12):1173-1213.
- Tilley JMA and Terry RA. A two-stage technique for the in vitro digestion of forage crops. *Grass Forage Sci* 1963; 18(2):104-111.
- Troegeler-Meynadier A, Nicot MC, Bayourthe C, Moncoulon R and Enjalbert F. Effects of pH and concentrations of linoleic and linolenic acids on extent and intermediates of ruminal biohydrogenation in vitro. *J Dairy Sci* 2003; 86(12):4054-4063.
- Van Soest PJ, Robertson JB and Lewis BA. Methods for dietary fiber, neutral detergent fiber, and nonstarch polysaccharides in relation to animal nutrition. *J Dairy Sci* 1991; 74(10):3583-3597.